

TITAN DK2500 R&L

Right- and lefthand overedging machines

Designed to be included in fully automatic lines :
where both sides of the carpet are overedged simultaneously,
more than doubles the production



- Standard overedging machine : two threads.
- Model DK 2500/3 : three threads overedging.

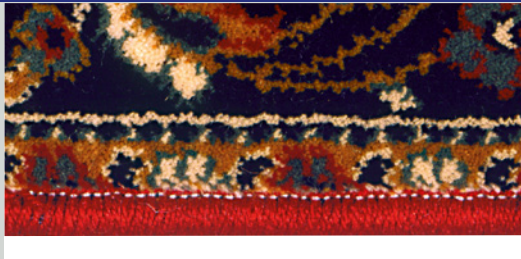


Fig.1 : TITAN DK2500 -Two threads finishing.

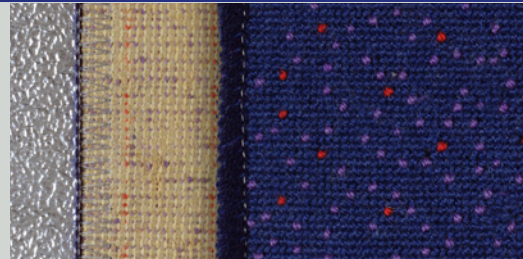


Fig.2 : TITAN DK2500/3 -Three threads finishing:
front and back view.

APPLICATIONS :

Overedging (serging) of woven, tufted or needle punched carpets with any type of backing.
Light or heavy materials can be handled by the machine, with all types of threads.

SPECIFICATIONS :

- Speed : 2800 stitches/min.
- Stitch width : 10 to 12 mm (standard).
- Density of stitches : 1 to 10 stitches/cm.
- Threads : all types of threads.

REMARK :

- 3-threads overedging machines available

OPTIONS :

- Are designed to reduce unproductive times and are making the adjustments easier.
- They will determine the productivity and the quality of your finishing department.
- For the full description of these options, please look at the end of the description of all the TITAN DK 2500 models.